

end the waste time

zenchroma
One Shade Universal Composite



NEW



all shades in one syringe

Universal Composite

ZenChroma is a light-curing microhybrid and ultrafine radiopaque filler with the talent to provide high color adaptation to every shade of tooth to which it is applied.

ZenChroma has colour-imitation ability to 16 vita classical shades with just one shade of composite. It can adapt the shade by imitate the cavity wall surrounding in which applied tooth. Therefore, **ZenChroma**, eliminates the shade taking procedure, allows minimize dentist' treatment time, reduces the composite inventory in different shades, and it eliminates the wastage of very often unused composite shades and shade-matching procedures.

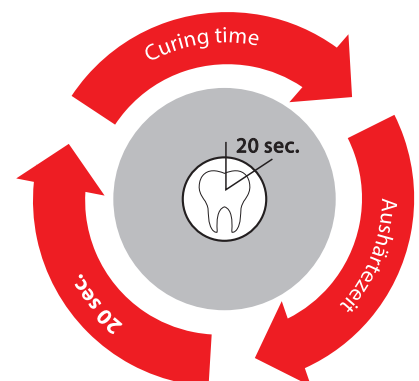
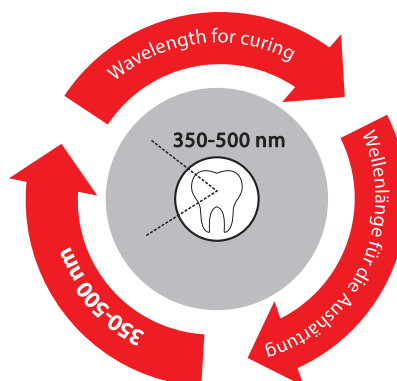
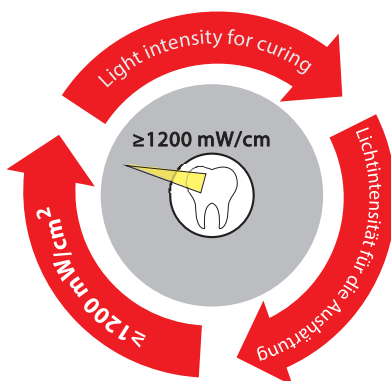
ZenChroma is available in syringes and compules. The compules are for single use. Please do not reuse them, as this makes it impossible to rule out contamination and germ formation.

- 1 COMPOSITION**

Glass powder, diurethane dimethacrylate, silicon dioxide, Bis-GMA, tetramethylene dimethacrylate.
- 2 TOTAL FILLER**

75% by weight (53% by volume) inorganic filler (0.005 - 3.0 μm)
- 3 INDICATIONS**
 - ✓ Direct anterior and posterior restorations in Black's classes I, II, III, IV, and V cavities.
 - ✓ Inlays, onlays and laminate veneers
 - ✓ Extended fissure sealing in molars and premolars
 - ✓ Splinting loose teeth
 - ✓ Adjusting the contours and shades to improve aesthetics
- 4 APPLICATION**

Before commencing the treatment, clean the tooth with non-fluoride polishing paste. Apply the ZenChroma to cavity using with layering technique.



Comparison of Physical Properties

	President Dental	Competitor
	zenchroma One Shade Universal Composite	Equivalent Product
Flexual Strength (MPa)	150	130
E-modul (GPa)	12655	9524
Compression Strenght (MPa)	479	400
24h Vickers-Hardness (MPa)	690	610



Advantage

- ✓ Esthetic results
- ✓ Reduced treatment time
- ✓ Increased efficiency
- ✓ Reduce waste on seldom used shades
- ✓ Transparency of > 8%
- ✓ Perfect shade match between filling and tooth
- ✓ Different colors create an overall color impression
- ✓ Shade easily adapts to natural tooth structure

OPAQUER: Suplamenteary Material

At the Class III and IV restorations when there is limited surrounding dentition, We recommend to use ZenChroma with Opaquer which is it's supplementary material. The function of Opaquer is reducing the shade-matching which caused by cavity of the mouth.



Before / Step 1



Fill Opaquer / Step 2



Fill ZenChroma / Step 3



Before



After



Dr. Ruslan Mansurov
President Dental International Lecturer

"ZenChroma helps me in making beautiful restorations that noone will be able to tell apart from real teeth in no time..."



All Different Shades



Etching process/ step 1



Adhesive Bond / step 2



Fill Zenchroma/ step 3



Fill Zenchroma / step 4



Fill Zenchroma / step 5



Optionally, Zenit Color to fissure characterization and Novatwist to high gloss polishing can be used. / step 6

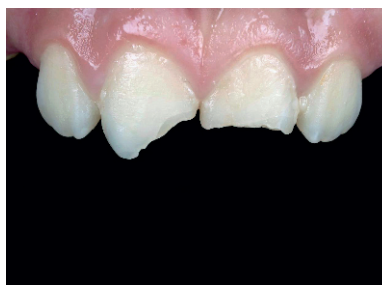


all shades in one syringe

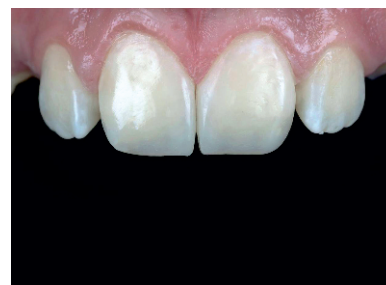


Dr. Samir Karimov
President Dental International Lecturer

"ZenChroma one-shade universal composite allow me to achieve excellent esthetic outcome, simplifies the color selection process and reduces the amount of time required to produce esthetic restoration..."



Before



After



Ukraine



Dr. Vladyslav Tolkachev
President Dental International Lecturer

"ZenChroma is a revolution in the world of composite materials. This material has amazing manual properties, simple and comfortable to use. ZenChroma gives us the opportunity to get excellent aesthetic and functional restorations without spending time on shades matching."



Before



After



Japan



Dr. Iwata Jun

"ZenChroma is a much better composite than other one-shade composites I've tested before, both in terms of color mimicking and handling. This product is really good."



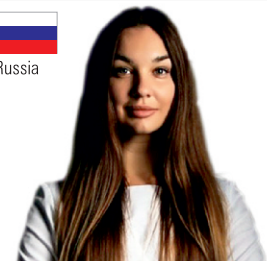
Before



After



Russia



Dr. Alisa Chegodaeva
President Dental International Lecturer

"ZenChroma is a magic composite. In addition to adapting to all tooth colors, its strength and color stability are also very good. I'm enchanted"



Before



After



Romania



Dr. Romana Cretu
President Dental International Lecturer

"Best composite regarding the chameleon effect, easy manipulation due to its consistency. ZenChroma, simply zen!"



Before



After



Serbia



Dr. Dobroslov Puresevic

"ZenChroma Universal composite comes in useful in case when there is superficial caries on the molar tooth with relatively preserved occlusal anatomy. Utilising stamp technique for copying the occlusal topography, along with the Zenit Flowable and ZenChroma composite, we can achieve highly functional and esthetic restoration of the posterior teeth."



Before



After



Indonesia



Dr. Fero Munadri

"About ZenChroma, what I thought was impossible to equate one shade with many colors, but it's work, it's really real. ZenChroma make aesthetic restoration work to easy, simple and fast. I think all dentist should try it."



Before



After



Colombia



Dr. Miguel Madrid

"Hi friend ZenChroma has arrived to simplify restorative dentistry, reducing clinical time when choosing the color, also achieving optimal aesthetic and functional results."



Before



After



Jordan

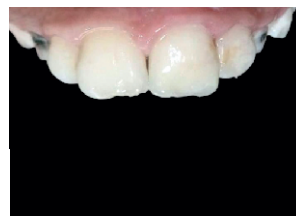


Dr. Sami Ebdair

"How easy it is to restore with a composite that can mimic all tooth shades! Moreover, there is no need to change the restoration in teeth whitening."



Before



After



Libya



Dr. Mohammad Alaiesh

ZenChroma is the only composite in all my direct posterior restorations, easy to manipulate and because of its chameleon effect, you will match any shade in the posterior teeth



Before



After



Palestine



Dr. Mohammed Shaga

You can make all restorations with one shade composite ZenChroma without worrying about which shade to be most convenient.



Before



After

Product Code / Produktcode

PRD.100.01.ZENCHRM.UNIZENCHROMA - Universal Composite Refill

Package Details / Verpackungsdetails

- 1x 4gr Refill (Universal)

PRD.100.01.ZENCHRM.OPZENCHROMA - Universal Composite Opaquer Refill

Package Details / Verpackungsdetails

- 1x 4gr Refill (Opaquer)

PRD.100.01.ZENCHRM.COM.UNI - Universal Composite Compile / Capsule

Package Details / Verpackungsdetails

- 20 x 0.30 gr Compile / Capsule



"Follow President Dental Product Clinical Cases On [f](#) President Dental Study Club"



/president_dental